



P R E S E N T S

Oil Series Water Heaters

John Wood



OIL-FIRED

INDIRECT

STORAGE BOOSTERS



Why Oil?

Oilheat. 99.9% Clean, 100% Warm.

Oilheat is Efficient. Oilheat is significantly more efficient than other forms of heating, such as natural gas and liquid propane.

Oilheat is Reliable. A diversified source of supply represents one of Oilheat's greatest strengths. Heating oil is refined from crude oil that comes from an impressive number of countries including Canada, Norway, Scotland, Saudi Arabia, Trinidad and Venezuela.

Oilheat is Clean. When we say that Oilheat is "99.9% Clean" that describes just how far Oilheat science has come. Advances in Oilheat technology and low-sulfur heating oil formulas have reduced particle emissions to near zero levels.

Oilheat is Safe. One of the safest heating sources ever, Oilheat will not explode—it won't even burn unless it is first turned into a fine mist. You can actually drop a lighted match into heating oil and the oil will extinguish the flame.

Why John Wood?

Saying you're the leader is not as good as proving it. All we think about is how to improve our products and company, and we have done this for over 50 years. We're constantly engaging in research and development to further advance our products as well as customer service and technical support. We feel it's important to listen to our customers, because it's their feedback that inspires our thoughts, evolves our products, and revolutionizes the industry.

With endless hot water, energy savings, space savings, environmentally friendly design, and easy installation, John Wood water heaters are beyond compare.

Exclusive, Patented Innovation. TankSaver® is an exclusive innovation that impedes corrosion and comes standard on our water heaters. As glass within the tanks wears, the stainless steel TankSaver® virtually eliminates rust on the metal tank body.



Without
TankSaver®



With
TankSaver®

OIL-FIRED WATER HEATERS



Commercial Warranty
3 year inner
tank warranty,
1 year on parts.

Residential Warranty
6 year inner
tank warranty,
1 year on parts.

Our John Wood® series of oil-fired water heaters includes models for virtually every application from a single family home to a multi-unit resort hotel.

Features

- Factory-installed nipples for easy installation
- Galvanized steel bottom pan resists corrosion
- Glass-lined inner tank and sacrificial magnesium anodes extend tank life
- Immersion-type aquastat with an integral high limit safety cut-off for precise water temperature control and protection against overheating
- Universal mounting design fits most burners
- Ceramic fiber combustion chamber maximizes heat retention
- Supplied with a blocked flue safety switch
- Factory installed drain valve
- Suitable for combination applications, potable water and space heating

Center-Flue Residential Models

- Adaptable to retrofit old burners
- CFC-free foam insulation
- Front access to T&P valve
- 3/4" water connections
- Certified for use with ETL listed field power venter, Field Controls Model SWG11 4HD

Center-Flue Commercial Model

- Multi-flue design for fast recovery
- Equipped with multiple anode rods for long life
- Heavy-duty fiberglass insulation
- 1" water connections
- Certified for use with ETL listed field power venter, Field Controls Model SWG11 4HD

Rear-Flue and Combo-Flue Residential Models

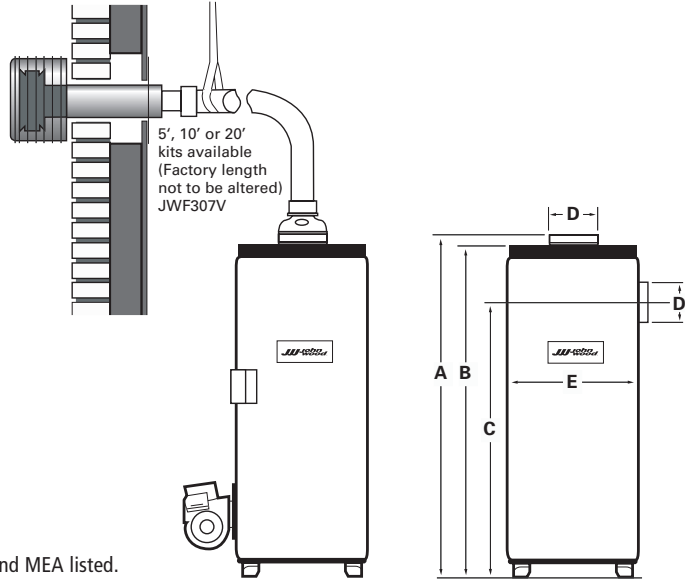
- Heavy-duty fiberglass insulation
- 1" water connections on 70 US gallon models
- 3/4" water connections on 30 and 50 US gallon models

Direct Vent Residential Model

- Vents directly to the outside through the wall with 5', 10' or 20' flexible vent kits*†
- Efficient Beckett AFG burner with pre-purge and post-purge*
- Burner and vent kit available
- CFC-free foam insulation
- 3/4" water connections
- Sealed combustion chamber eliminates backdraft vapors

*Sold separately. †Factory length not to be altered.

OIL-FIRED WATER HEATERS



Commonwealth of Massachusetts and MEA listed.

CAPACITY & PERFORMANCE

Model (see note)	Capacity (Gal. / Liters)	Standard Firing Rate GPH	Input B.T.U.	First Hour Rating (Gal. / Liters)	Recovery Gal / Hr		Tube Insertion Length (inches / cm)	Combustion Efficiency	Energy Factor (EF)
					90°F / 50°C (Gal. / Liters)	100°F / 55°C (Gal. / Liters)			
Center-flue Residential									
JWF307	32 / 121	0.65 – 0.75	90,000	110 / 416	92 / 348	84 / 318	4 3/4 / 12.1	77 – 80%	0.60
JWF507	50 / 189	0.75	106,000	190 / 719	107 / 405	100 / 379	5 3/4 / 14.6	77 – 80%	0.55
Center-flue Commercial									
JWF657	63 / 238	1.00 – 1.25	138,500	163 / 617	143 / 541	129 / 488	7 3/4 / 19.7	82 – 86%	N/A
Direct Vent*									
JWF307V	32 / 121	0.65	90,000	110 / 416	92 / 348	84 / 318	4 3/4 / 12.1	79 – 81%	0.60
Rear / Combo-flue									
JW317 / 327	30 / 114	0.75	106,000	150 / 568	107 / 405	100 / 379	7 / 17.8	84 – 85%	0.62
JW517 / 527	50 / 189	0.85	119,000	147 / 556	123 / 466	109 / 414	7 / 17.8	84 – 85%	N/A
JW717 / 727	70 / 265	1.00	138,500	N/A	143 / 541	129 / 488	7 / 17.8	84 – 85%	N/A

ROUGH-IN DIMENSIONS

Model (see note)	A (inches / cm)	B (inches / cm)	C (inches / cm)	D (inches / cm)	E (inches / cm)	Water Connection (inches NPT)	Shipping Weight (lbs / Kg)
Center-flue Residential / Direct Vent							
JWF307 / JWVF307V	52 3/4 / 134	50 5/8 / 129	–	6 / 15	20 / 51	3/4	172 / 78
JWF507	60 1/2 / 154	58 1/2 / 149	–	6 / 15	22 / 56	3/4	214 / 97
Center-flue Commercial							
JWF657	68 3/4 / 175	65 3/8 / 166	–	6 / 15	26 / 66	1	379 / 172
Rear / Combo-flue							
JW317 / 327	61 / 160	61 / 155	48 7/8 / 124	6 / 15	24 / 61	3/4	230 / 105
JW517 / 527	66 / 168	63 1/4 / 161	54 / 137	7 / 17.8	28 / 71	3/4	352 / 160
JW717 / 727	69 3/4 / 177	67 3/4 / 172	58 1/2 / 149	7 / 17.8	32 / 81	1	455 / 207

Notes: JWF307, JWF507, JW317 and JW327 meet NAECA and DOE standards. JW517, JW527, JWF657, JW717 and JW727 meet ASHRAE/IES 90.1b-1992 energy standards.

*Direct vent models must use vent kit and burner supplied by John Wood® with pre-purge and post-purge features. Burners are sold separately and warranted by the burner manufacturer.

OIL-FIRED BURNERS

John Wood offers oil burners designed and engineered by two of the industry's leading oil burner manufacturers. These burners were developed specifically for John Wood oil-fired water heaters to optimize their performance and provide a steady and abundant supply of hot water. The combination of John Wood Water Heater expertise and cutting-edge oil burner technology ensures our customers benefit from integrated custom solutions for every application. All burners are available with either a single-acting or dual-acting thermostat for precise temperature control.



Beckett

Beckett's residential flame-retention model AFG burner is easy to install and to service, engineered to provide years of reliable service, and backed by solid technical support. The AFG burner comes with a Beckett CleanCut Fuel Unit, Beckett R7184 Series 5 Primary Control, self-centering Nozzle Line Electrode Assembly and one-piece Flame Retention Head.

www.beckettcorp.com

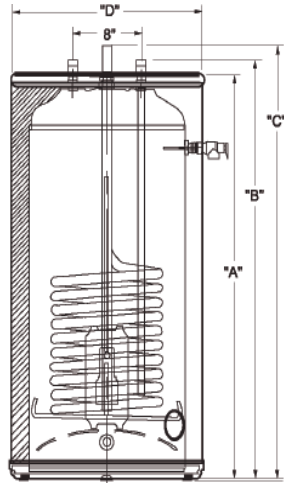


Carlin

The Carlin EZ-1 oil burner is quick and easy to install and provides reliable start-up, quiet shutdowns, and dependable service. The EZ-1 burner comes with Carlin 48245 cad cell primary control, Carlin high efficiency PSC motor, Carlin 41000 14-KV electronic ignitor, and Carlin Quiet-Mix™ retention head.

www.carlincombustion.com

INDIRECT WATER HEATERS



John Wood indirect water heaters supply continuous hot water for a wide variety of applications.

Features

- Equipped with an adjustable thermostat, pre-wired and ready for connection to a circulator pump for accurate and automatic temperature control
- Factory-installed nipples for easy installation
- Galvanized steel bottom pan resists corrosion
- Glass-lined coil for efficient heat transfer
- Full 2" CFC-free foam insulation for energy efficiency
- Glass-lined inner tank and sacrificial magnesium anodes extend tank life
- Clean-out port for lime removal on 75 gallon models
- 3/4" NPT boiler connections

JW5 – 5 year inner tank warranty, 1 year on parts.
 JW10 – 10 year inner tank warranty, 1 year on parts.



CAPACITY & PERFORMANCE

Model (see note)	Capacity (Gal. / Liters)	Boiler Output BTU	First Hour Rating 90°F (50°C) Rise / Hr (Gal. / Liters)	First Hour Rating (Gal. / Liters)	Tube Insertion Length (inches / cm)
JW5-30IT / JW10-30IT	30 / 110	40,000	70 / 265	69 / 261	29 / 74
		60,000	98 / 371	104 / 344	
		80,000	125 / 473	139 / 526	
		100,000	152 / 575	173 / 655	
JW5-40IT / JW10-40IT	40 / 150	40,000	84 / 318	69 / 261	39 1/2 / 100
		60,000	111 / 420	104 / 394	
		80,000	138 / 522	139 / 526	
		100,000	165 / 625	173 / 655	
JW5-75IT / JW10-75IT	75 / 300	40,000	120 / 454	70 / 265	47 1/4 / 120
		60,000	148 / 560	105 / 397	
		80,000	175 / 662	140 / 530	
		100,000	201 / 761	174 / 659	
		120,000	229 / 867	209 / 791	

ROUGH-IN DIMENSIONS

Model (see note)	A (inches / cm)	B (inches / cm)	C (inches / cm)	D (inches / cm)	Shipping Weight (lbs / Kg)
JW5-30IT / JW10-30IT	32 / 81	34 / 86	35 / 189	22 / 56	130 / 59
JW5-40IT / JW10-40IT	42 1/2 / 108	44 / 112	45 1/2 / 116	22 / 56	160 / 73
JW5-75IT / JW10-75IT	53 / 135	54 / 137	56 / 142	26 / 66	270 / 122

*When the boiler input exceeds 100,000 BTU/H and if the unit has a factory supplied T&P valve, it must be replaced with one rated for that input. All models comply with ASHRAE 90.1.

STORAGE BOOSTER TANKS

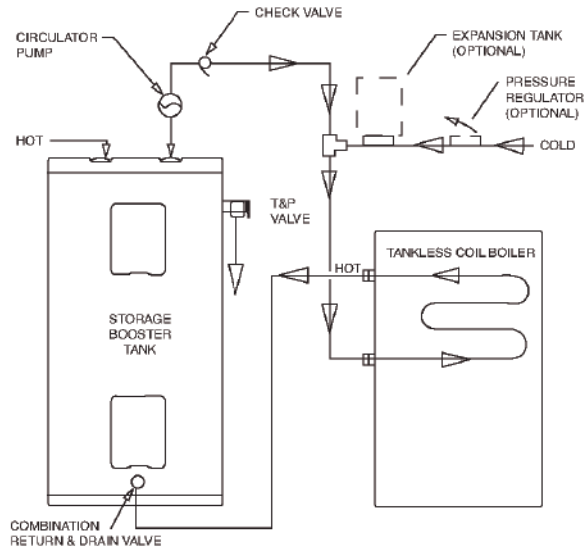
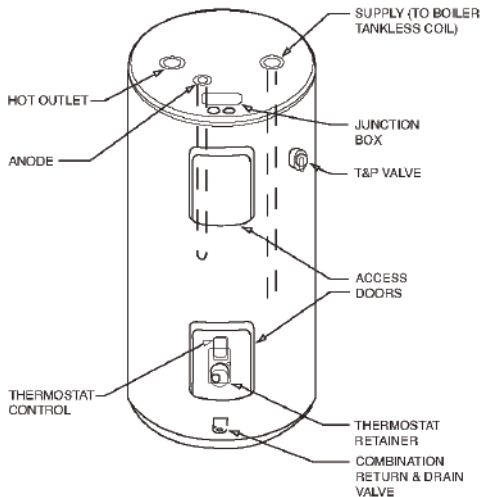


John Wood 40, 50 and 80 US gallon storage booster tanks meet the hot water requirements of modern households.

Features

- Equipped with an adjustable thermostat, pre-wired and ready for connection to a circulator pump for accurate and automatic temperature control
- Factory-installed nipples for easy installation
- Galvanized steel bottom pan resists corrosion
- Glass-lined inner tank and sacrificial magnesium anodes extend tank life
- 3/4" NPT boiler connections
- Full 2" CFC-free foam insulation for energy efficiency
- Commonwealth of Massachusetts and MEA listed

5 year inner tank warranty,
1 year on parts.



CAPACITY & DIMENSIONS

Model	Capacity (Gal. / Liters)	Water Connections (inches / cm)	Shipping Weight (lbs / Kg)	Height (inches / cm)	Diameter (inches / cm)
JW5-40SB	40 / 131	3/4 / 2	123 / 56	47 1/4 / 120	20 / 51
JW5-50SB	50 / 189	3/4 / 2	136 / 62	48 3/4 / 124	22 / 56
JW5-80SB	80 / 303	3/4 / 2	201 / 91	59 / 150	24 / 61

All models comply with ASHRAE 90.1.

Order Entry and Sales

500 Princeton Road (FEDEX, UPS)
Johnson City, TN 37601-2030
P.O. Box 4808 (Mailing)
Johnson City, TN 37602-4808
(800) 937-1037
FAX (800) 581-7224

Warranty and Service

500 Princeton Road (FEDEX, UPS)
Johnson City, TN 37601-2030
P.O. Box 1597 (Mailing)
Johnson City, TN 37605-1597
(800) 999-9515
FAX (800) 999-5210



For more information visit our website at:
www.johnwoodwaterheaters.com